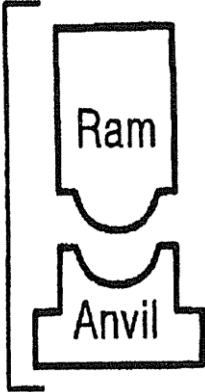




B9

Hammer Components



Hammer



Striker Plate

Hammer

Manufacturer:	Berminghammer
Model Number:	B9
Hammer Type:	Diesel
Serial Number:	
Manufacturers Maximum Rated Energy:	28.4 KJ
Stroke at Maximum Rated Energy:	3.23 m
Range in Operating Energy:	12.4 to 28.5 KJ
Range in Operating Stroke:	1.4 to 3.23 m
Ram Weight:	900 Kg
Modifications:	None

Impact Block

Weight: 128Kg (283lb)

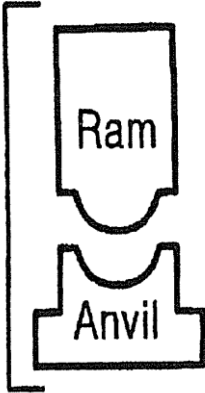
Striker Plate (Typical 18-in DDH)

Weight: 154.22Kg (340 lb)
Diameter: 495 mm (19.5 in)
Thickness: 102 mm (4 in)



B21

Hammer Components



Hammer



Striker Plate

Hammer

Manufacturer:	Berminghammer
Model Number:	B21
Hammer Type:	Diesel
Serial Number:	
Manufacturers Maximum Rated Energy:	72 KJ
Stroke at Maximum Rated Energy:	3.5 m
Range in Operating Energy:	28.8 – 74.2KJ
Range in Operating Stroke:	1.40- 3.60m
Ram Weight:	2100 Kg
Modifications:	None

Impact Block

Weight: 328Kg (722lb)

Striker Plate (Typical 21.5-in DDH)

Weight: 330 Kg (729 lb)
Diameter: 597 mm (23.5 in)
Thickness: 152 mm (6 in)

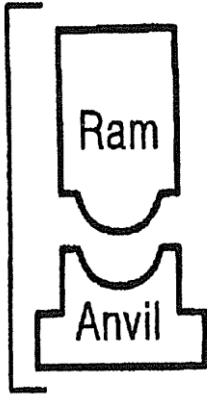
Striker Plate (Oversized 27.25-in DDH)

Weight: 624.6 Kg (1377.06 lb)
Diameter: 743 mm (29.25 in)
Thickness: 206.5 mm (8.13 in)



B32

Hammer Components



Hammer



Striker Plate

Hammer

Manufacturer:	Berminghammer
Model Number:	B32
Hammer Type:	Diesel
Serial Number:	
Manufacturers Maximum Rated Energy:	113 KJ
Stroke at Maximum Rated Energy:	3.5 m
Range in Operating Energy:	43.9 – 113 KJ
Range in Operating Stroke:	1.40 – 3.6 m
Ram Weight:	3200 Kg
Modifications:	None

Impact Block

Weight: 544Kg (1198lb)

Striker Plate (Typical 21.5-in DDH)

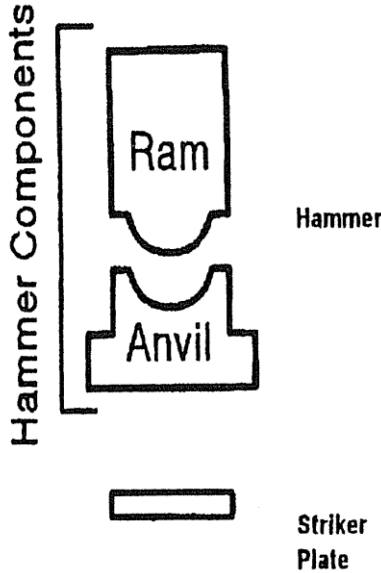
Weight: 330 Kg (729 lb)
Diameter: 597 mm (23.5 in)
Thickness: 152 mm (6 in)

Striker Plate (Oversized 27.25-in DDH)

Weight: 624.6 Kg (1377.06 lb)
Diameter: 743 mm (29.25 in)
Thickness: 206.5 mm (8.13 in)



B5505



Hammer

Manufacturer:	Berminghammer
Model Number:	B5505
Hammer Type:	Diesel
Serial Number:	
Manufacturers Maximum Rated Energy:	148 KJ
Stroke at Maximum Rated Energy:	3.5 m
Range in Operating Energy:	57.7 – 148 KJ
Range in Operating Stroke:	1.40 – 3.60 m
Ram Weight:	4200 Kg
Modifications:	None

Impact Block

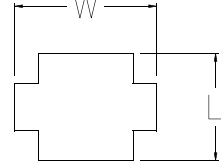
Weight: 1055Kg (2326lb)

Striker Plate (Typical 24.5-in DDH)

Weight: 521.6 Kg (1150 lb)
Diameter: 648 mm (25.5 in)
Thickness: 203 mm (8 in)

Striker Plate (Concrete Drive Adapter for 24" Square Piles)

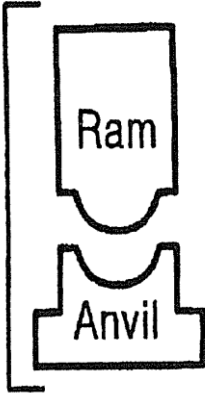
Weight: 882.2 Kg (1945 lb)
Length: 648 mm (25.5 in)
Width: 787 mm (31 in)
Thickness: 254 mm (10 in)





B64

Hammer Components



Hammer



Striker Plate

Hammer

Manufacturer:	Berminghammer
Model Number:	B64
Hammer Type:	Diesel
Serial Number:	
Manufacturers Maximum Rated Energy:	225.7 KJ
Stroke at Maximum Rated Energy:	3.5 m
Range in Operating Energy:	88.0 – 225.7 KJ
Range in Operating Stroke:	1.40 - 3.60 m
Ram Weight:	6400 Kg
Modifications:	None

Impact Block

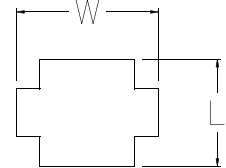
Weight: 1348Kg (2972 lb)

Striker Plate (Typical 31.5-in DDH)

Weight: 1251.9 Kg (2760 lb)
Diameter: 864 mm (34 in)
Thickness: 305 mm (12 in)

Striker Plate (Concrete Drive Adapter for 24" Square Piles)

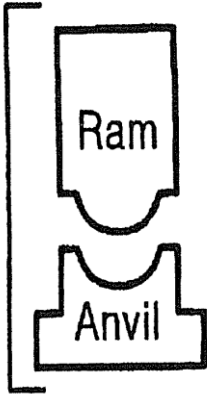
Weight: 997 Kg (2200 lb)
Length: 648 mm (25.5 in)
Width: 787 mm (31 in)
Thickness: 279 mm (11 in)





B6505

Hammer Components



Hammer



Striker Plate

Hammer

Manufacturer:	Berminghammer
Model Number:	B6505
Hammer Type:	Diesel
Serial Number:	
Manufacturers Maximum Rated Energy:	283 KJ
Stroke at Maximum Rated Energy:	3.5 m
Range in Operating Energy:	110 – 283 KJ
Range in Operating Stroke:	1.40 – 3.60 m
Ram Weight:	8000 Kg
Modifications:	None

Impact Block

Weight: 1701Kg (3750 lb)

Striker Plate (Typical 32.5-in DDH)

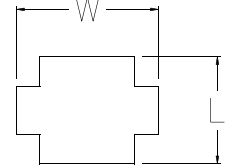
Weight: 1251.9 Kg (2760 lb)
Diameter: 864 mm (34 in)
Thickness: 305 mm (12 in)

Striker Plate (Oversized 37.5 DDH; BX-DH37.5-0)

Weight: 1688.5 Kg (3722.5 lb)
Diameter: 1000 mm (39-3/8 in)
Thickness: 305 mm (12 in)

Striker Plate (Concrete Drive Adapter for 30" Square Piles)

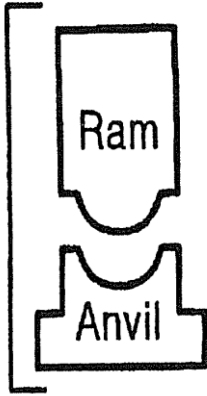
Weight: 1621.6 Kg (3575 lb)
Length: 800 mm (31.5 in)
Width: 927 mm (36.5 in)
Thickness: 330 mm (13 in)





B6505 HD

Hammer Components



Hammer



Striker Plate

Hammer

Manufacturer:	Berminghammer
Model Number:	B6505
Hammer Type:	Diesel
Serial Number:	
Manufacturers Maximum Rated Energy:	300 KJ
Stroke at Maximum Rated Energy:	3.0 m
Range in Operating Energy:	137 – 300 KJ
Range in Operating Stroke:	1.40 – 3.05 m
Ram Weight:	10,000 Kg
Modifications:	None

Impact Block

Weight: 1701Kg (3750 lb)

Striker Plate (Typical 32.5-in DDH)

Weight: 1251.9 Kg (2760 lb)
Diameter: 864 mm (34 in)
Thickness: 305 mm (12 in)

Striker Plate (Oversized 37.5 DDH; BX-DH37.5-0)

Weight: 1688.5 Kg (3722.5 lb)
Diameter: 1000 mm (39-3/8 in)
Thickness: 305 mm (12 in)

Striker Plate (Concrete Drive Adapter for 30" Square Piles)

Weight: 1621.6 Kg (3575 lb)
Length: 800 mm (31.5 in)
Width: 927 mm (36.5 in)
Thickness: 330 mm (13 in)

